



**K2**  
CONSTRUCTION

We build **confidence.**



VALUES AND PURPOSE	3
K2 APPROACH	5
INTERIOR EXPERIENCE	7
PORTFOLIO	11





# VALUES >>>

## DEFINING our culture

K2 is on a mission to raise the bar—to take an inherently stressful industry and make it better. Our approach goes beyond schedule and budget, because we build more than just your project. We build confidence, trust and lasting relationships.

Since our founding 20 years ago, we have remained committed to our core values of positivity, integrity and passion—a set of guidelines that defines how we strive to conduct business day-in and day-out. These values were developed collaboratively by our employees and have made a lasting impact on who we are as a company.



### Positivity

Encourage others;  
bring out the best  
in each other



### Integrity

Do the right thing,  
even when no one  
is looking



### Passion

Put your heart into  
everything you do





Kimball Showroom | Dallas, TX  
7,000 SF

# PURPOSE

## to be your **HERO**

This means in every relationship, K2's goal is to do everything in our power to help others on the team excel in their role on the project and make the entire process as smooth and trouble-free as possible.

We operate under these principles not only because it supports our long-term industry relationships, but because it makes the construction process really simple. When we focus our efforts on helping others succeed, the rest of the business tends to fall into place as well.





# BEYOND schedule and budget

With 20 years of experience delivering complex construction projects in Dallas, we utilize the K2 project management procedures to deliver consistently high-quality, technically sound offices to our clients. Our cloud-based project and document management softwares, Procore and PlanGrid, allow us to communicate critical project details to our clients, design teams, subcontractors and other partners in real-time. We host comprehensive weekly project meetings with all involved parties, submit weekly progress reports and conduct our own "pre-punch" on every project—We want to finish as strongly as we started.

Waddell Serafino | Dallas, TX  
27,000 SF



# EXPERTISE

## corporate INTERIORS

We have completed almost 2,000 projects in the DFW Metroplex since inception, a majority of those for repeat clients. Our team is known for our ability to work under complicated circumstances without disrupting ongoing operations. We take a construction process that is often fraught with unpleasant surprises, anxiety and unknown costs and we deliver projects that are predictable, making the process smooth, seamless and enjoyable to the client.

Ultimately, your success determines our success, and we will do everything in our power to make sure that the project is successful on your terms. We want **to be your HERO.**





## ORIX Headquarters

Dallas, TX  
100,000 square feet

Designed by HKS  
Project Managed by Stillwater Capital

Located in Trammell Crow Center, this project consisted of renovating three floors of second generation office space for a new headquarters for ORIX Corporation, a global financial services company. A newly added internal monumental stair connects each floor with the goal of promoting communication and encouraging productivity amongst their operations and investment center staff. Unique design elements include wood baffle ceiling elements, large format marble tile in reception and elevator lobbies, matchwood wall and ceiling panels, custom-built banquette seating, custom wood baffle ceiling and reclaimed wood surround station in the breakroom, high-end lighting package including a programmable LED light fixture in the stair, and heartfelt baffle ceilings in the conference rooms.







# Nokia North American Headquarters

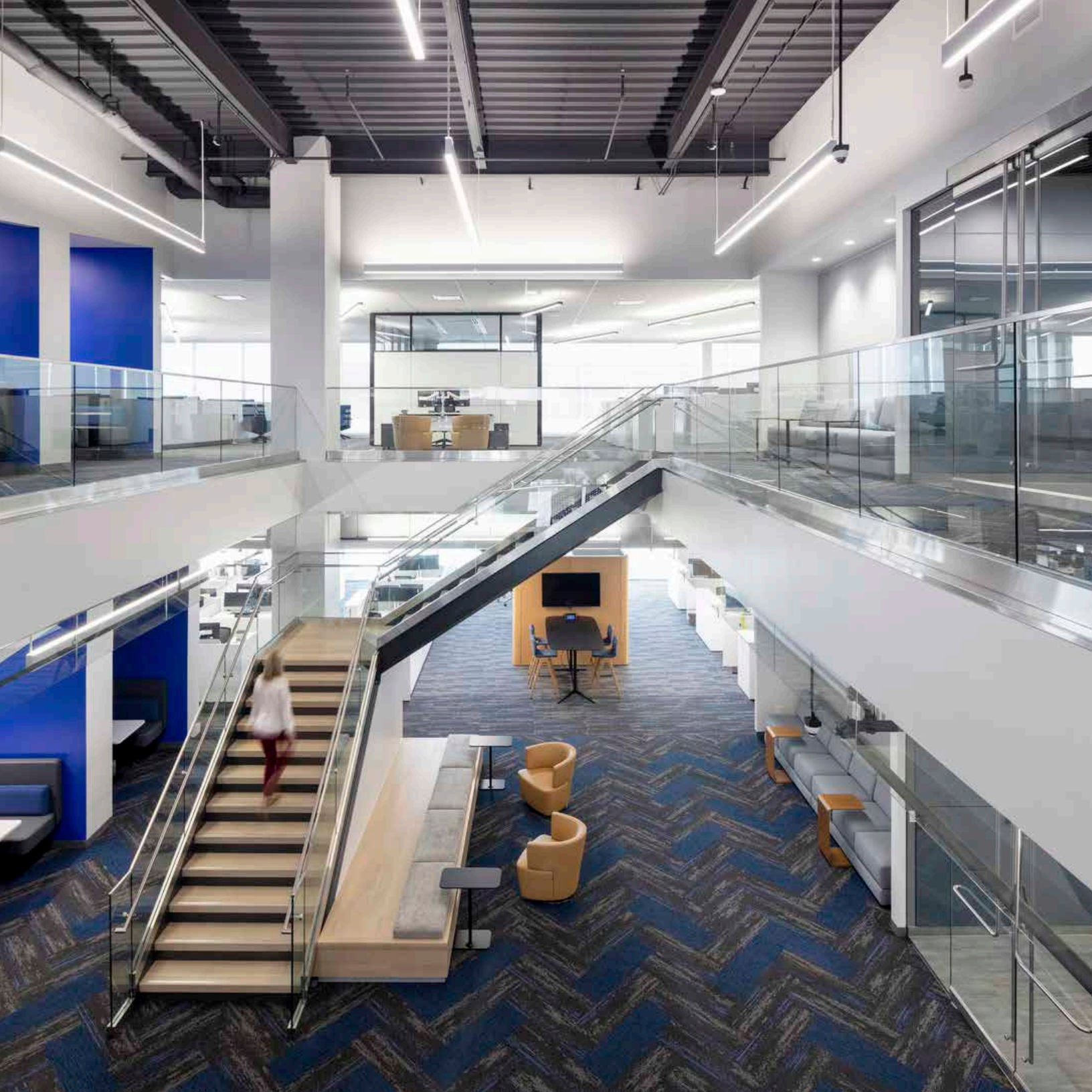
Dallas, TX  
100,000 square feet

Designed by Callison RTKL  
Project Managed by JLL/Nokia

Nokia consolidated more than 2,300 North Texas employees with the construction of their new North American Headquarters in the Cypress Waters development. Designed by CallisonRTKL, this office incorporates bright color, extensive collaborative open workspace and heavy specialty lighting including cast, directional and accent lights. The use of specialty back-painted glass and custom millwork pieces create privacy without the confines typical of enclosed offices. Each of the four floors was completed simultaneously without phasing to expedite the schedule, and the total square footage was occupied by the tenant on the same day, requiring extensive coordination with all team members, including third-party vendors.







## Blucora Headquarters

Dallas, TX  
145,000 square feet

Designed by Corgan  
Project Managed by Cushman & Wakefield

Under new company leadership, Blucora Corporation needed a headquarters that would serve as a cultural epicenter for their staff. Totalling four floors at Cypress Waters, this new office's most notable feature included the installation of an internal staircase to create connectivity and promote collaboration. Unique features included microtopper flooring system over polished concrete, high-end ceiling elements including 9wood, exposed, and acoustical ceilings, inset angled alcove seating, an 8-foot tall decorative fire feature, and custom backpainted glass to match the client's new pantone color.







## Common Desk Trammell Crow Center

Dallas, TX  
47,000 square feet

Designed by ENTOS Design  
Project Managed by Stream Realty

Common Desk selects Trammell Crow Center, the newly redeveloped icon building in the Arts District of downtown Dallas, as its next North Texas coworking location. Encompassing two full floors, this project includes a new monumental stair with wood trim elements and features French composite hardwood floors, custom-built glass and millwork office fronts, and open to deck ceilings. Amenities like the jewel-toned library nook with a secret door to an executive conference room, full-service coffee shop under the new stairs, and a moody craft cocktail bar puts this Common Desk location into an echelon of its own.





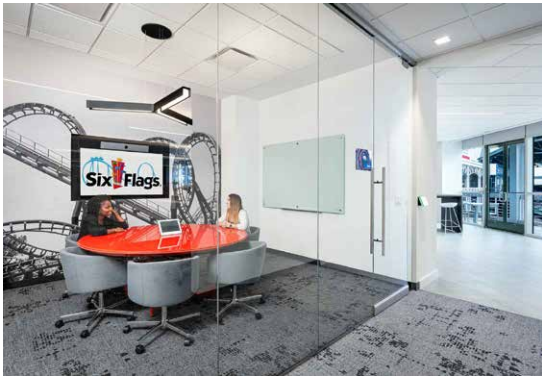


## Six Flags Headquarters

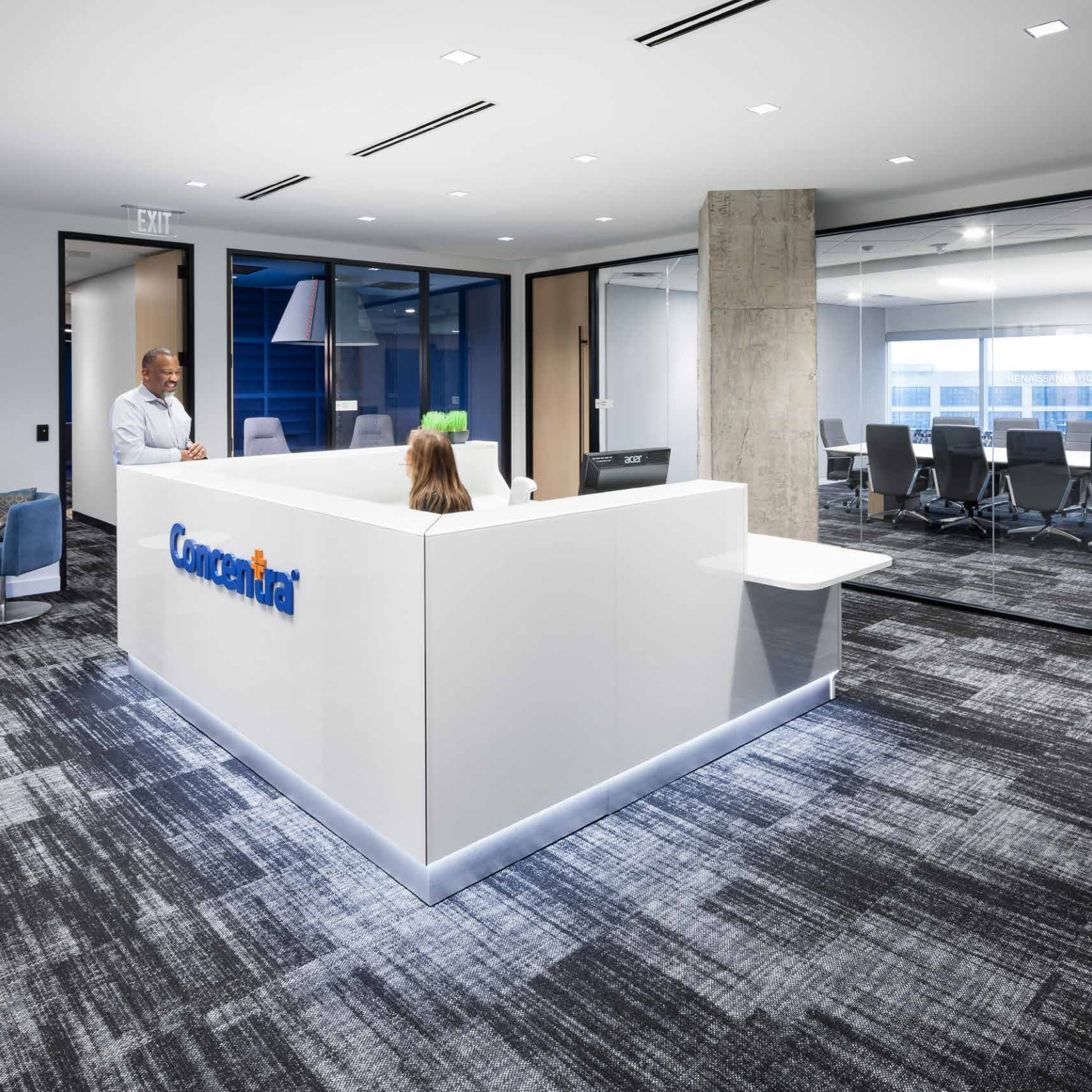
Arlington, TX  
47,000 square feet

Designed by BOKA Powell  
Project Managed by JLL

Six Flags Over Texas new headquarters cultivates a spirit of adventure and entertainment for its staff—much like the experience they have provided to their guests for over 70 years. Housing 120 employees, the office features stain-grade wood panel ceiling elements, baffles, black andonyzed RACO glass office fronts, and multiple unique conference rooms, each with a different theme park attraction concept and design. Part of the scope included transforming an existing warehouse space into a 10,000 square foot print shop including high-end 3-D printers where Six Flags produces all graphics and collateral for the park. This relocation brings the theme park’s long history with the Texas Rangers full circle as the two original venues that made up the Arlington Entertainment District.







## Concentra Headquarters

Addison, TX  
88,000 square feet

Designed by Page  
Project Managed by CBRE

Concentra illustrates a commitment to their mission—to improve the health of America’s workforce—by providing their own staff with an inspiring new headquarters. Totalling five floors at Spectrum Center, this office is vibrant yet professional. Collaborative work rooms are the heart of the workplace and feature jewel-toned blue and purple back painted glass, Spinneybeck wall panels, and acoustical ceiling baffles aligned with linear light fixtures. Thorough coordination of above-ceiling MEP systems was required in the executive lounge and reception areas to preserve the design intent of the open ceilings and statement geometric-baffle lighting elements. This workplace is primarily open office and features an extensive branding graphics package, banquette seating, and a custom-built breakroom island.







# Atos North American Headquarters

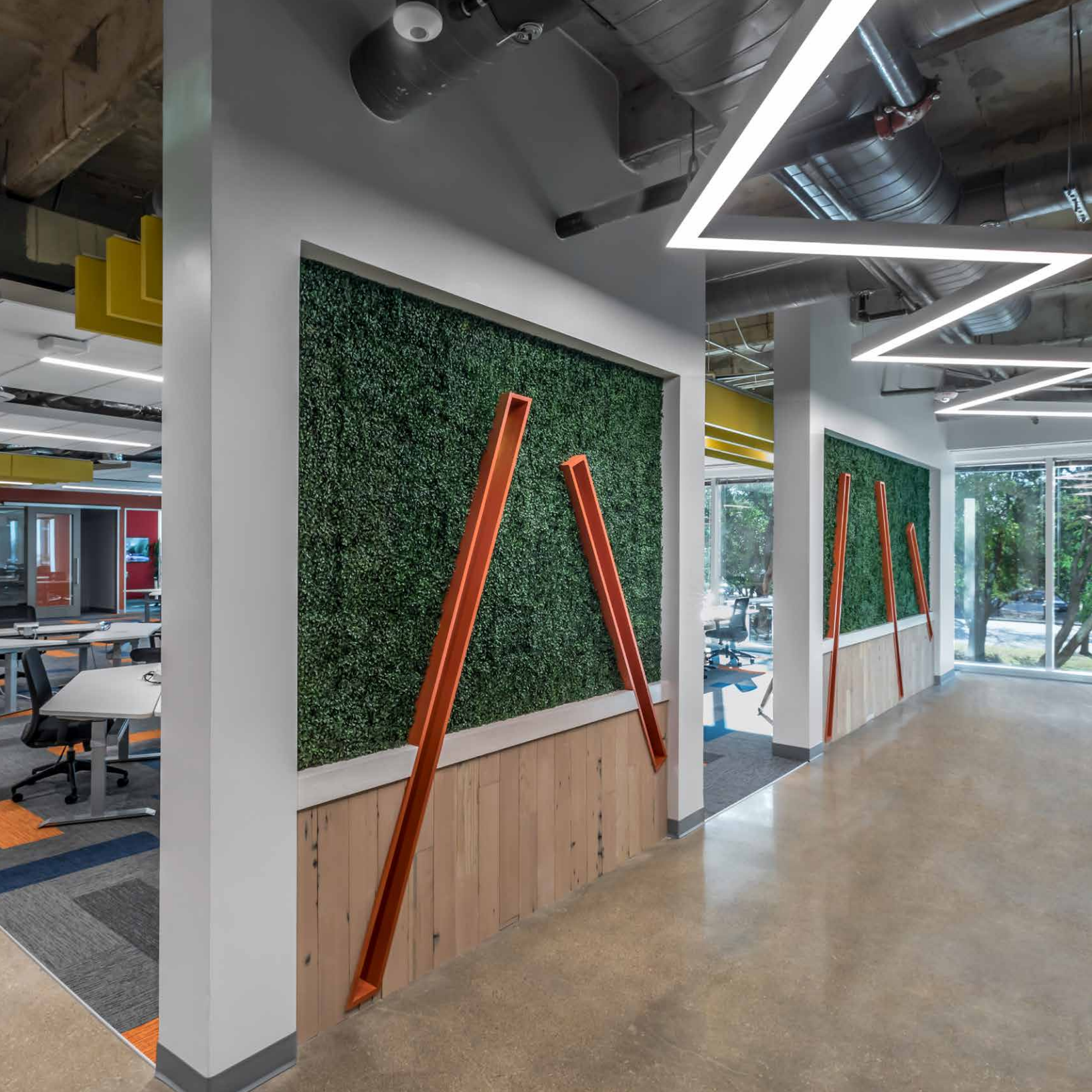
Irving, TX  
98,000 square feet

Designed by Gensler  
Project Managed by Cushman & Wakefield

Atos is a digital services company headquartered in Bezons, France and Munich, Germany. They are the worldwide information technology partners for the Olympic & Paralympic Games. Atos hired K2 Construction to build its regional headquarters in Irving, TX. This 98,000 SF project has several distinctive features: cutting edge IT and audio visual technology, 100% programmable LED lighting, a mix of open, cloud and acoustic ceilings, curved walls throughout and curved custom wood bench seating. The office also has a full-service commercial grade kitchen and cafeteria, a fitness center, collaborative spaces, conference centers, executive offices and demonstration areas. The project was completed in two sixteen week phases.





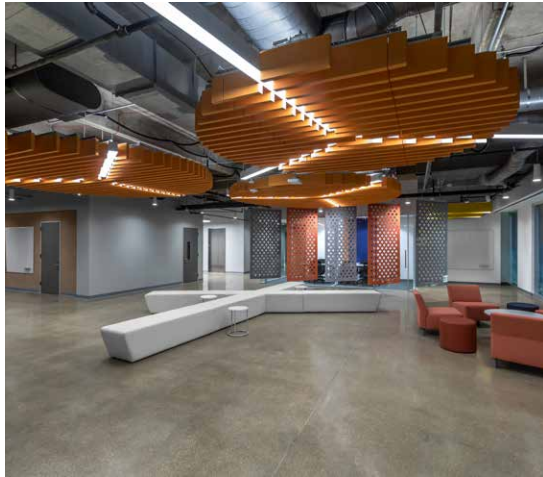


# Infosys

Richardson, TX  
160,000 square feet

Designed by ENTOS Design  
Project Managed by Foundation Real Estate

Infosys’ new Technology and Innovation Hub in Richardson was completed by K2 in partnership with ENTOS Design and is contributing to their campaign to hire 10,000 American workers within the next calendar year. This eight-floor project spanning two buildings in 2400 Glenville features open to deck ceilings and polished concrete floors in the common areas, ample huddle areas and private rooms for more focused work, and primarily open work areas around the perimeter of each floor. K2 was awarded a second four-floor, 90,000 square foot







# Toyota Experience Center

Plano, TX  
44,000 square feet

Designed by JRA and Corgan  
Project Managed by JLL

Located within the state-of-the-art Toyota Motor North American Headquarters, this project consisted of a full-floor shell finish of a Museum and Customer Experience Center. Toyota’s first and only visitor attraction in North America houses relics of the automaker’s past, including the first ever hand-made car. The center utilizes leading edge technology to provide an interactive experience including a virtual reality driving simulator for both off-road and track vehicles and a live stream of a Lexus assembly line in Japan. The first, third and fourth floors of this headquarters building surrounding the museum remained fully operational during construction.







# Alternative Technology Company

Frisco, TX  
20,000 square feet

Designed by Revel  
Project Managed by Charter Acquisitions

Located in The Star, a 91-acre campus developed by the Dallas Cowboys, K2 Construction collaborated with Revel Architecture out of San Francisco to build this 20,000 square foot office. The client’s first office location in Texas consists of closed and open work space along the south and west ends with social areas, formal meeting rooms and huddle touchdowns on the west end to best utilize the views of the Dallas Cowboys practice field. Unique design features of this adaptable office include polished concrete, open to deck ceilings, and varying material and textural elements that facilitate separations of space in an otherwise open office.







Thank you for your interest in K2 Construction.

K2's promise to our clients goes beyond delivering a project on time and on budget. You get a completed project, yes—but you also get the experience of working with a partner who intimately understands your project goals and delivers a collaborative approach from the beginning.

Ultimately, your success determines our success, and we will do everything in our power to make sure that the project is successful on your terms. We want to be your HERO.

If you would like more information about the solutions that K2 can provide, please do not hesitate to contact me.

David Danielson  
Partner

214.363.7870 office  
214.244.6166 mobile  
ddanielson@k2gc.com



6688 N. Central Expressway  
Suite 100  
Dallas, TX 75206

[k2gc.com](http://k2gc.com)

