



**K2**  
CONSTRUCTION

We build **confidence.**





VALUES AND PURPOSE 3

K2 APPROACH 5

INTERIOR EXPERIENCE 9

PORTFOLIO 11





## VALUES

# DEFINING our culture

Since our founding 17 years ago, we have remained committed to our core values of positivity, integrity and passion—a set of guidelines that defines how we strive to conduct business day-in and day-out. These values were developed collaboratively by our employees and have made a lasting impact on who we are as a company.



### Positivity

Encourage others;  
bring out the best  
in each other



### Integrity

Do the right thing,  
even when no one  
is looking



### Passion

Put your heart into  
everything you do





## PURPOSE

to be your **HERO**

This means in every relationship, K2's goal is to do everything in our power to help others on the team excel in their role on the project and make the entire process as smooth and trouble-free as possible.

We operate under these principles not only because it supports our long-term industry relationships, but because it makes the construction process really simple. When we focus our efforts on helping others succeed, the rest of the business tends to fall into place as well.





## BEYOND schedule and budget

With 17 years of experience delivering complex construction projects in Dallas, we utilize the K2 project management procedures to deliver consistently high quality, technically sound projects to our clients. Our cloud-based project and document management softwares, RedTeam and PlanGrid, allow us to communicate critical project details to our clients, design teams, subcontractors and other partners in real-time. We host comprehensive weekly project meetings with all involved parties, submit weekly progress reports and conduct our own "pre-punch" on every project—We want to finish as strongly as we started.





# EXPERTISE

## corporate INTERIORS

We have completed almost 2,000 projects in the DFW Metroplex since inception, a majority of those for repeat clients. Our team is known for our ability to work under complicated circumstances without disrupting ongoing operations. We take a construction process that is often fraught with unpleasant surprises, anxiety and unknown costs and we deliver projects that are predictable, making the process smooth, seamless and enjoyable to the client.

Ultimately, your success determines our success, and we will do everything in our power to make sure that the project is successful on your terms. We want **to be your HERO.**





## Atos North American Headquarters

Irving, TX  
98,000 square feet

Designed by Gensler  
Project Managed by Cushman & Wakefield

Atos is a global digital services company operating in 73 countries and serving as the worldwide technology partner for the Olympic Games. K2 completed this project in two sixteen-week phases. The office has several distinctive features: a commercial kitchen and cafeteria, cutting edge audio visual technology, programmable LED lighting, a mix of open, cloud and acoustic ceilings, curved walls throughout and curved custom bench seating.





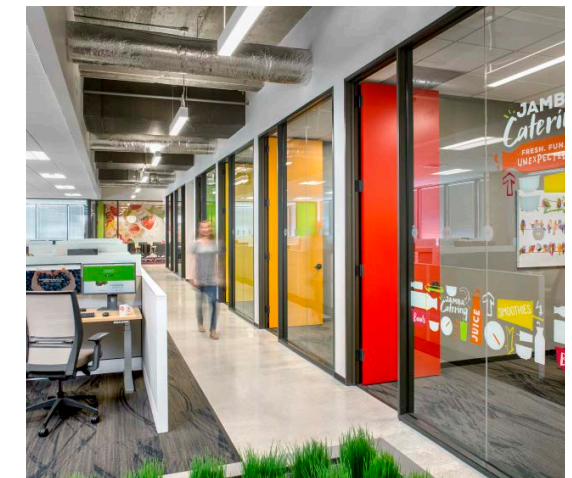


## Jamba Juice Headquarters

Frisco, TX  
27,000 square feet

Designed by IA | Interior Architects  
Project Managed by Cushman & Wakefield

Jamba, Inc. relocated its headquarters to Frisco, Texas, re-energizing their office to reflect the colorful Jamba Juice brand. The first floor includes the reception area plus a commercial test-kitchen and a standalone Jamba Juice store. The seventh floor has a mix of collaborative space, private office, conferencing, training and a breakroom. The training room includes a custom wood partition system, designed by the K2 team, that can be opened to create one large meeting space.





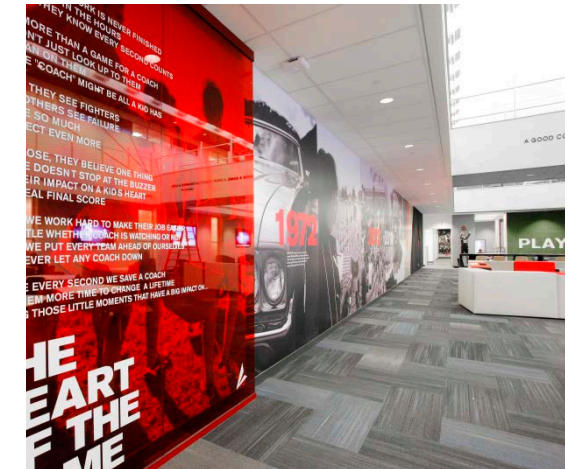
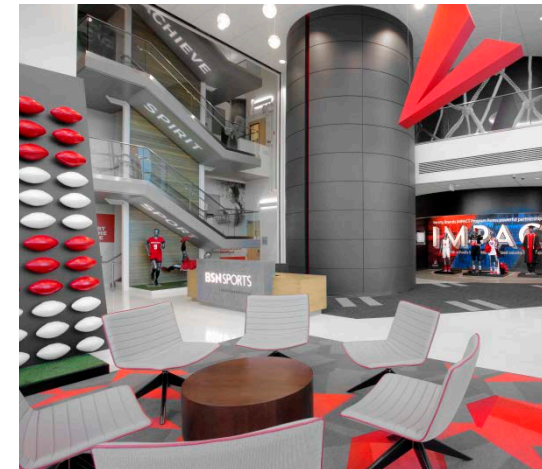


## Varsity Brands

Farmers Branch, TX  
140,000 square feet

Designed by Corgan  
Project Managed by Cushman & Wakefield

Varsity Brands is the leader in team athletic gear, cheerleading uniforms and student milestones. They hired K2 to assist in a large-scale refresh of the stand-alone office to include interesting design features such as simulated basketball court flooring, turf feature walls and graphics displayed on 70% of the common area walls. K2 accommodated \$4.5 million in owner-supplied furniture that was installed concurrent with construction. From contract to completion, the scope more than doubled with no impact to the schedule.





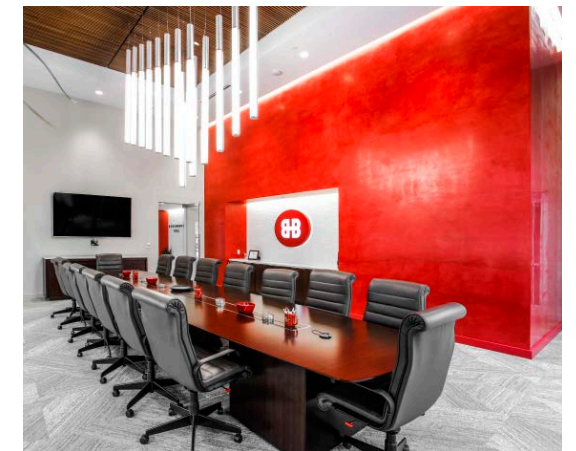
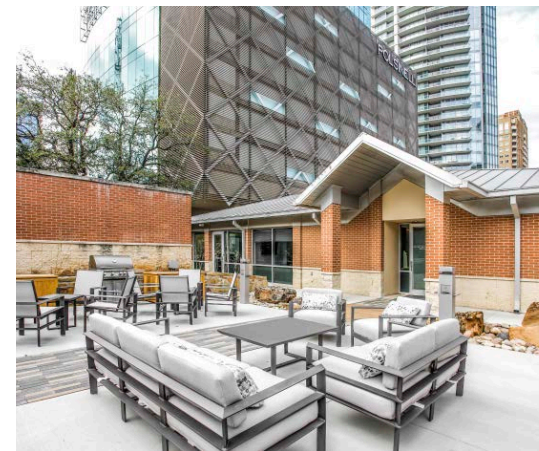


## Benchmark Title

Dallas, TX  
10,600 square feet

Designed by GFF Architects  
Project Managed by Parkwood Development

K2 was selected to renovate their 10,400 square foot standalone office building in Uptown. One of the most significant efforts involved replacing the original structural wood framing with new steel beams and columns, facilitating the removal of many interior walls. This open office boasts two seamless limestone feature walls, LED lighting and glass office fronts, plus a new covered entrance, courtyard, landscaping and sidewalks.





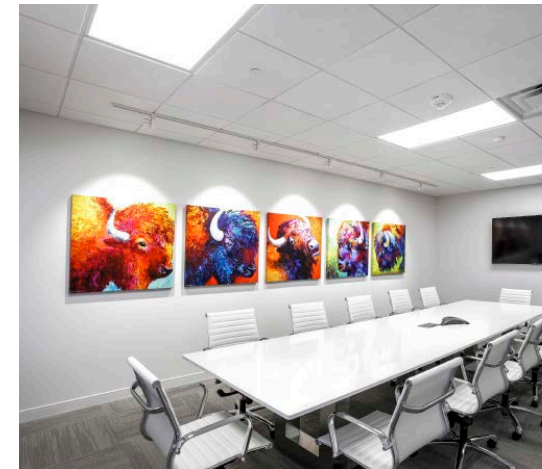


## Spire Realty Headquarters

Dallas, TX  
10,300 square feet

Designed by idGroup  
Project Managed by Spire Realty

In partnership with idGroup, K2 was selected to complete the build out of Spire's new headquarters on the 21st floor of Bryan Tower. This office serves as a marketing center for their new developments and features polished concrete floors, glass office fronts and open ceilings. Unique design elements include sliding glass doors with aircraft-inspired hardware, Italian glass tile backsplash at the wet bar and a writable chalk-paint feature wall.





## Serendipity Labs Hall Arts

Dallas, TX  
29,000 square feet

Designed by Gensler  
Project Managed by Hall Financial

Serendipity Labs is a rapidly expanding company that delivers an upscale, hospitality-based coworking experience. K2 Construction was hired to complete their first Dallas location in Hall Arts which boasts 360 degree views of downtown Dallas. The office includes distinctive art displays and collaborative workspace designed to boost creativity and productivity.







## 2400 Glenville Capital Improvements

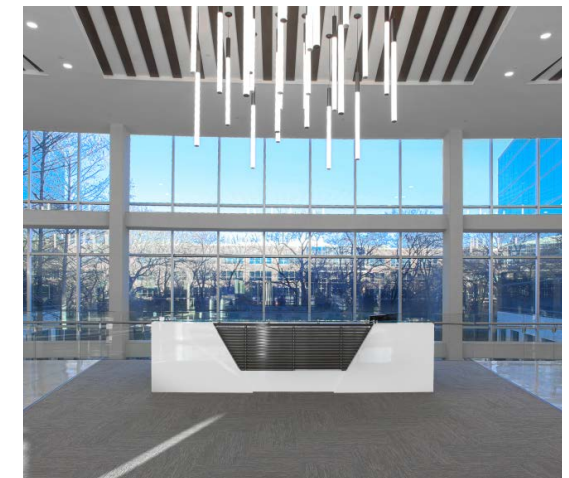
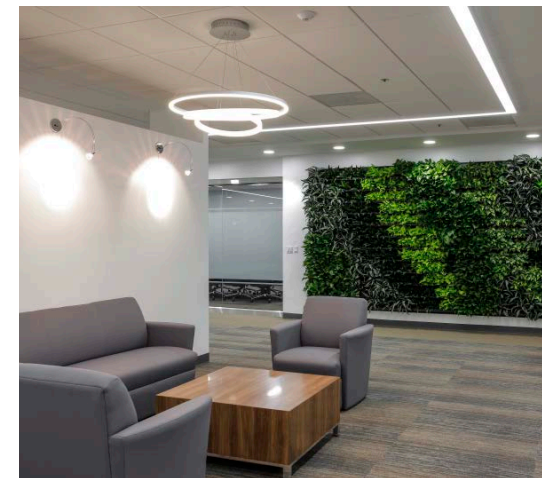
Richardson, TX

400,000 square feet (total building)

Design by Jones Commercial Interiors

Project Managed by Cushman & Wakefield

Located among 35 wooded acres, 2400 Glenville is a corporate campus consisting of four connected buildings. K2 was selected to complete this capital improvement project which included renovations to the main lobby, restrooms and corridors, a server room, fitness center, conference center and management office. Unique features included a glass grand staircase, floor to ceiling windows, modern light fixtures and wood accents. The building remained fully operational during construction.





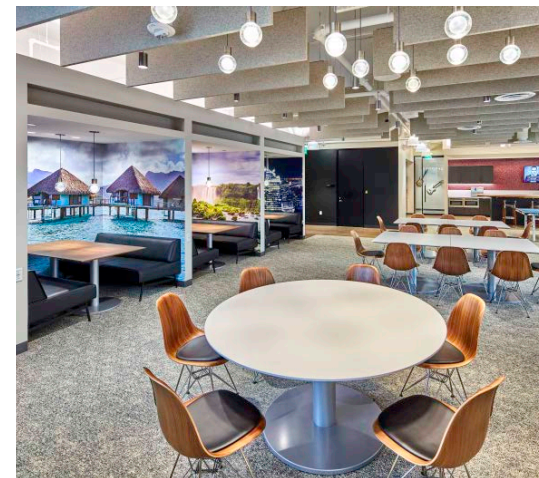


## Ansira

Dallas, TX  
88,000 square feet

Designed by DLR | Staffelbach  
Project Managed by CBRE

This four-floor finish-out in 3 Galleria Tower included structural glass fronts, polished concrete throughout, art deco baffled ceilings, programmable LED lighting and specialty wood accents. The most noteworthy construction effort involved demolition of structural slabs on three floors to accommodate a new central stairway. The office includes two breakrooms per floor with banquette seating, multiple conference rooms, open workstation space and executive offices.







## HighGround Advisors

Dallas, TX  
24,000 square feet

Designed by IA | Interior Architects  
Project Managed by JLL

This full-floor renovation for HighGround Advisors was located in Comerica Bank Tower, a 60-story, Class-A property. The scope included executive offices, lounges, reception area, breakroom, boardroom and open office space. Unique design features include framed glass office fronts with office sliders, stained wood feature walls, a fireplace in the executive lounge and open to deck ceilings with custom stained baffles.





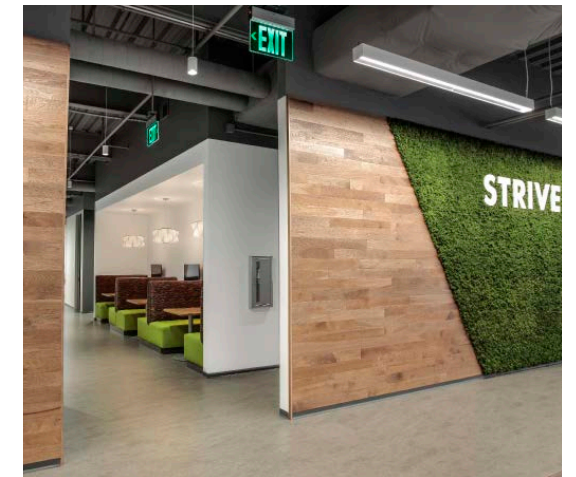
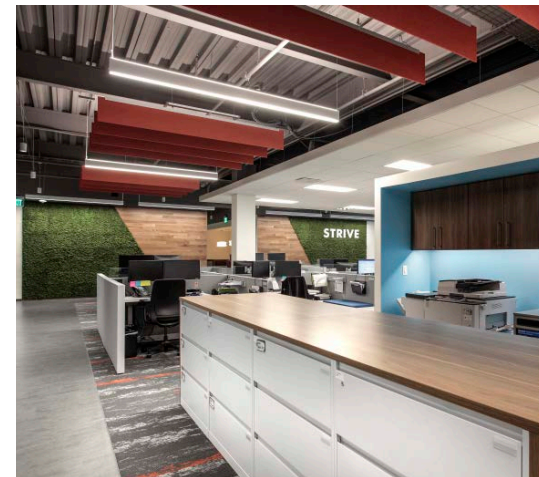


## MIC Global Services

Plano, TX  
31,000 square feet

Designed by IA | Interior Architects  
Project Managed by Cushman & Wakefield

MIC Global's new headquarters in the Lincoln R&D in Legacy VII building features an open office concept with breakrooms, conference rooms, multiple huddle spaces, a training center and a wellness room. MIC Global's values and mission statement are featured throughout the space via custom vinyl artwork and the live greenery "Strive" wall. This project was completed in 13 weeks in partnership with IA Interior Architects.





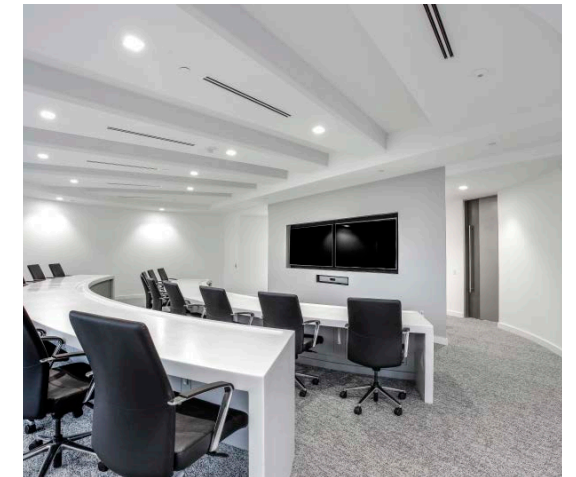


## Cyxtera

Addison, TX  
28,000 square feet

Designed by Gensler  
Project Managed by Holt Lunsford

K2 Construction partnered with Gensler on this high-end office for a repeat client in Addison Circle One. Unique angles are a consistent theme throughout the space starting with the wall connections, of which very few are perpendicular. Additionally, the specific angles of the aluminum fin feature wall create a code representing the Cyxtera mission statement. Other high-end finishes include open ceilings, baffles, terrazzo floors and stretched fabric light covers to create indirect, soft light in the auditorium.





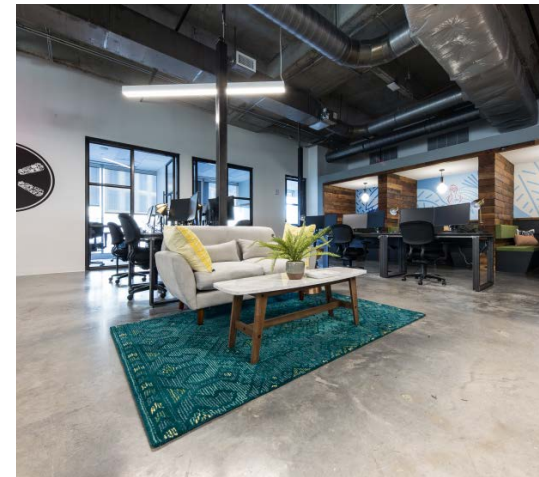


## Common Desk

Plano, TX  
25,000 square feet

Designed by ENTOS Design  
Project Managed by Granite Properties

With four unique locations, Common Desk's new Plano office provides coworking space to stimulate creativity, connectivity and productivity. K2 collaborated with ENTOS Design to deliver this new office concept, with high-end finishes, wood accents and versatile workspace solutions, plus the addition of a 2,000 square foot mezzanine, staircase and a three-story elevator. Special features included an intricate wall design using 3form in the updated public corridor and custom reception area.







## Excentus

Dallas, TX  
60,000 square feet

Designed by Furstenwerth & Bagley Design  
Project Managed by Lincoln Property Company

Excentus' tech-driven project was spread over two floors and features a clean design highlighted with natural wood and unique lighting. Essential to the project was a secured, in-house R&D area for the development of hardware, programming of software and delivery of their customer loyalty system. The remaining workplace included open office with private break-out rooms, a large breakroom with banquette seating and secured executive space.





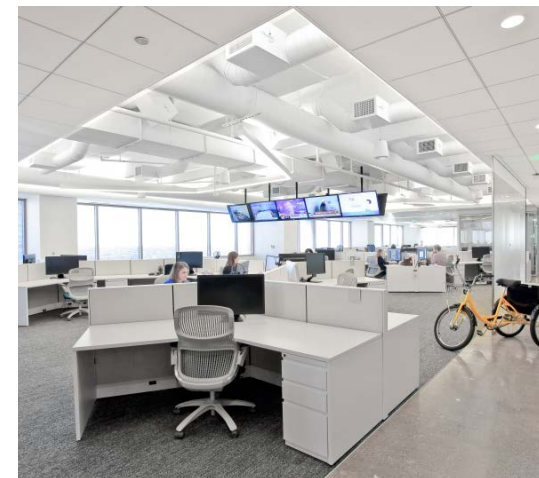


## Golin

Dallas, TX  
23,000 square feet

Designed by TPG Architecture  
Project Managed by CBRE

Golin is a global public relations and marketing firm that wanted this office to display their energetic brand. This eclectic space has a mixture of open, gyp and acoustic grid ceiling. Unique floor to ceiling screens, polished concrete, reclaimed wood and carpeted floors provide a sense of separation to the various workspaces.





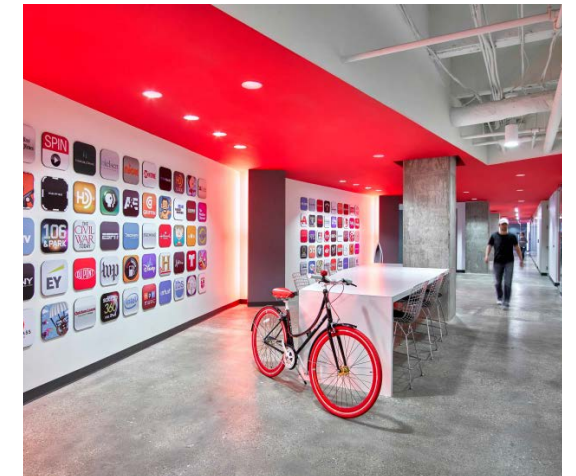
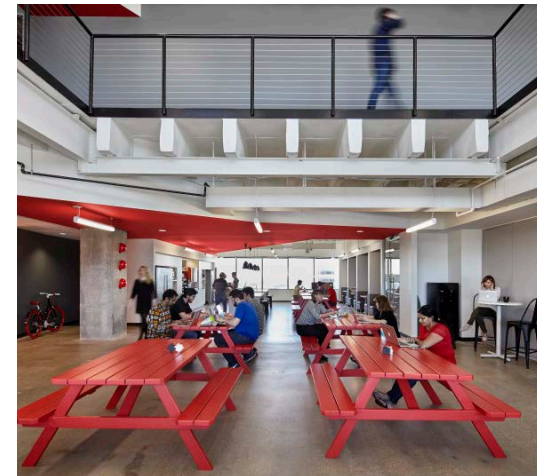


## Bottle Rocket

Addison, TX  
42,000 square feet

Designed by Gensler  
Project Managed by CBRE

This two-floor office was designed to spur creativity within the company's workforce. Unique design features include polished concrete, a mix of open collaborative space with dry erase walls and private offices for more focused work. K2 removed a section of concrete deck to create a structural atrium which creates connectivity between to the two floors.





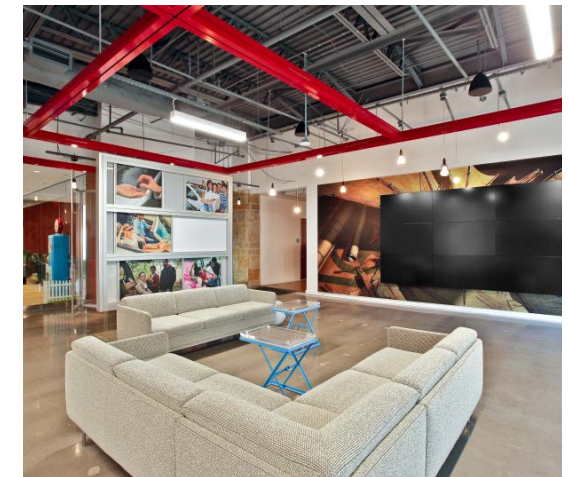


## Undisclosed Financial Institution

Plano, TX  
29,000 square feet

Designed by GFF Architects  
Project Managed by JLL

K2 provided construction services at this corporate campus to transform a traditional office environment into their “innovation lab”, a collaborative workspace. This new workspace was adjacent to the C-suite and the project was completed without disruption to these executives. The project was completed in three phases and was managed by JLL and designed by GFF.





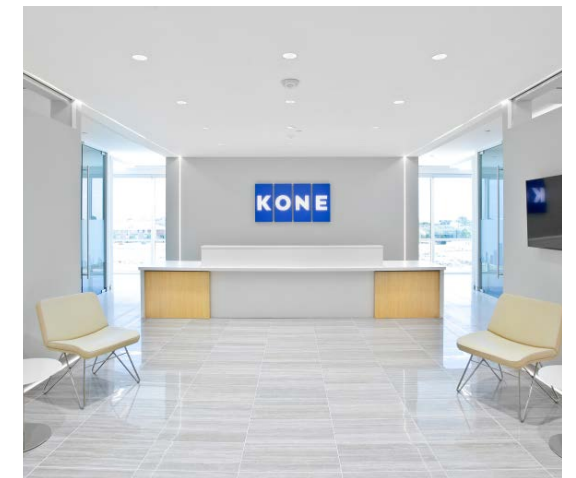


## KONE AllenPlace

Allen, TX  
175,000 square feet

Designed by Interprise Design  
Project Managed by JLL

KONE North America relocated to new campus consisting of a 3-story office building, testing tower, industrial warehouse and service center. K2 was hired to build out the Industrial Building offices, main office and warehouse. Two of the conference rooms have operating elevator doors as the main entry point. Rectangular LED lights cantilever over the hallway and the reception features lighting in the floor, walls and overhead, creating a tech-driven workplace.







Thank you for your interest in K2 Construction.

K2's promise to our clients goes beyond delivering a project on time and on budget. You get a completed project, yes—but you also get the experience of working with a partner who intimately understands your project goals and delivers a collaborative approach from the beginning.

Ultimately, your success determines our success, and we will do everything in our power to make sure that the project is successful on your terms. We want to be your HERO.

If you would like more information about the solutions that K2 can provide, please do not hesitate to contact me.

David Danielson  
Partner

214.363.7870 office  
214.244.6166 mobile  
ddanielson@k2gc.com



6688 N. Central Expressway  
Suite 100  
Dallas, TX 75206

[k2gc.com](http://k2gc.com)

